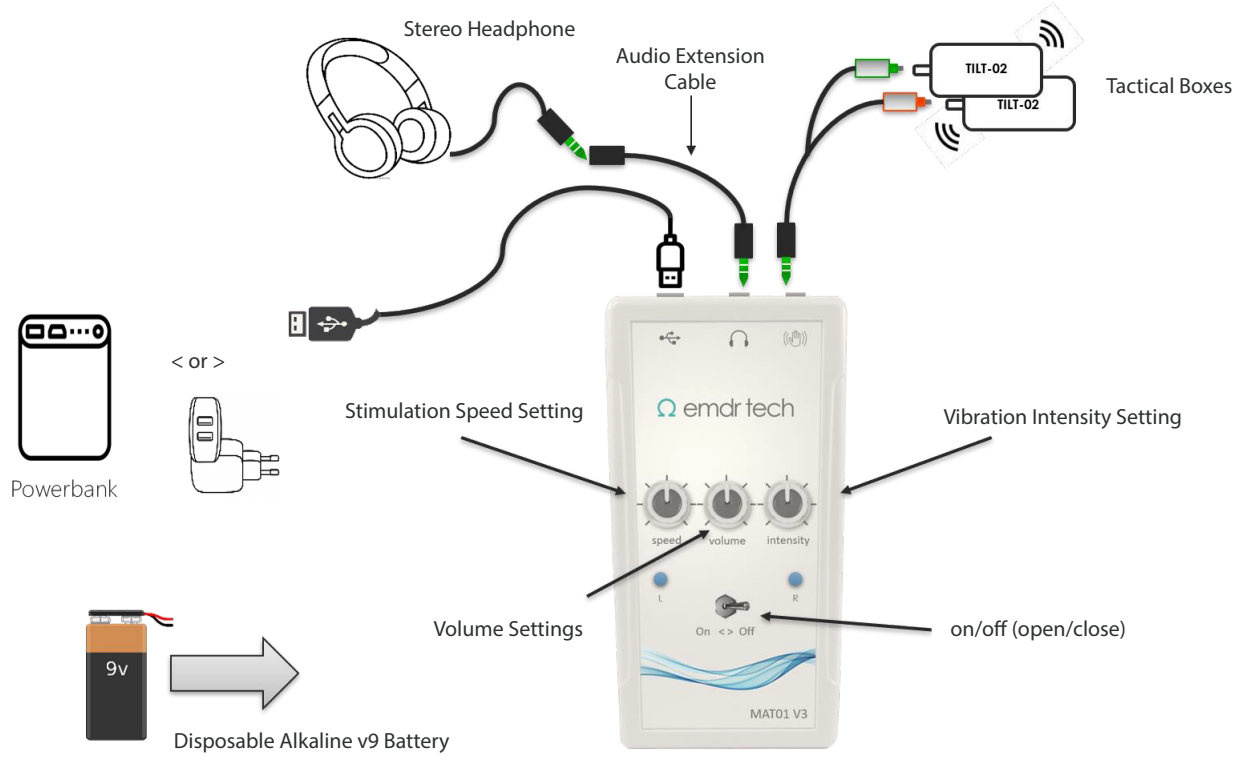


Quick Installation and Wiring Diagram



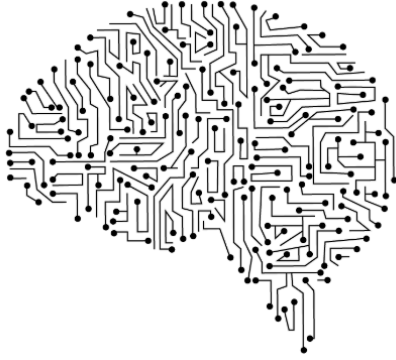
Not Included!



Caution : The device is not compatible with rechargeable batteries!

Set Contents

1. MAT Audio and Tactile BLS stimulation device (*) (1 pcs)
2. TILT02, Vibration boxes with green LEDs (2 pcs)
3. Headphone Stereo, 1.2m cable, 3.5mm connector (1 pcs)
4. CABLES:
 - Audio Extension Cable, 1.5m (1 pcs)
 - Tactile Boxes Extension Cable (1x3.5mm-2xRCA), 2.5m (1 pcs)
 - Mini USB power adapter connection cable, 1.8m (1 pcs)
5. User Manuel (1 pcs)
6. Warranty Certificate (this is your product sales invoice)



MAT

Audio & Tactile

EMDR Alternating Bilateral Stimulator

English User Manual

MAT

rev.20231019

This product is suitable for use as an assistive device by trained and certified EMDR therapists.

It is not intended for personal use.

Instruction For Use

Functional Definition

The MAT is basically a "speed-adjustable dual-channel metronome" that generates alternating, frequency-adjustable sound and vibration stimulation through peripherals (stereo headphones and vibration boxes).

Installation

After providing the cable connections described in the diagram, the EMDR therapist ensures that the client puts on the headset and holds the vibration boxes in separate hands. The device is used by the expert by following the instruction steps below.

Power Supply Connection

The device works with 9V alkaline battery or USB adapter connection.

For use with battery, the clamshell compartment on the back of the box must be opened and the battery must be placed in place after making the cable connections. After inserting the battery into the slot, put the cover back in place.

For USB powered use; you can operate your MAT by plugging the "Mini" side of your USB cable that comes in the box to the MAT and the standard USB side to your 5V smartphone charging adapter, or a PowerBank with a USB output for phone charging or one of your computer's USB outputs.

Initialization (On)

To start the BLS function, turn the On/Off switch in the bottom center to the "On" position. When the device is active, the red power LED will light up and the right and left blue LEDs inside the box will start flashing at the set speed.

Frequency / Speed Setting (Speed)

The excitation speed can be increased or decreased by turning the "Speed" knob (BLS). This setting regulates the left/right channel travel speed of the simultaneous sound and vibration functions. The specialist should make the appropriate adjustment by observing the flashing rate of the LEDs on the device indicating the stimulation activity.

Volume

The level of the sound (196Hz / G3) to be heard through the headphones will be adjusted (-/+) using the "Volume" button. The appropriateness of the volume level should be confirmed by asking the Client.

Vibration Intensity

The intensity of the vibration of the handles/vibration boxes that the Client will hold in his/her hand during the work will be adjusted by using the "Intensity" button (-/+). For the most effective vibration, it is recommended that the client holds the grips lightly with the fingertips.

Off / Pause

To turn off the device in battery operation, turn the On/Off switch in the bottom center to the "Off" position. The device will turn off and all LEDs on the device will go out.

When the same switch is turned to the "Off" position for use with USB adapter, the BLS function will pause, the blue LEDs will turn off and the red LED will signal faintly.

Important Notice !

CAUTION : Switching off the device when not in active use will significantly extend the battery life. It is recommended to remove the batteries, powerbank or charging connection of devices that will not be used for a long period of time! Please visit our website and social media accounts for frequently asked questions and the latest version of this document!

Other

Malfunctions

If you have any problems with your device, first consult the [Frequently Asked Questions] section on the [Support] page of our website www.emdrtech.com. If you continue to have problems, questions and uncertainties, do not hesitate to contact us via the [Service Contact] form on the same page.

Liability

This device is designed to support trained and certified EMDR therapists in their EMDR therapy. The practitioner is always responsible for the outcome of the therapy. The developer or seller of your device cannot be held responsible for the use of the device, the treatment results or any complaints from the Client. For more detailed information about the terms and conditions, please visit the [Support] page on our website www.emdrtech.com.

Warranty

The main device and vibration boxes in the set are under warranty for 2 years. The warranty period starts from the invoice date. Please keep a copy of your invoice and service documents for warranty purposes.

Conditions not covered by the warranty :

1. Wear and tear due to normal use and over time, defects caused by rough handling of the product, defects or damage caused by misuse of the product, any use contrary to the operating instructions supplied with the appliance.
2. The warranty does not cover defects caused or alleged to be caused by the use of the appliance in conjunction with or in connection with products, accessories, software and/or services not manufactured or supplied by the supplier.
3. Devices that have been serviced, repaired or otherwise unboxed by unauthorized persons or replaced with unapproved parts are not covered by the warranty.
4. Corrosion or oxidation of the device caused by exposure to environmental conditions with excessive humidity, hot steam or extreme temperatures or rapid changes in these conditions, or contact with food or liquid spills.
5. ShapeDevices found to be malfunctioning due to incorrect voltage adapters or poor quality powerbank usage or powerban/battery-induced chemical discharges will be excluded from the scope of warranty.